

## Modular Signal Towers / KombiSIGN 72

### KS72 Classic BWM 24VAC/DC GN/YE/RD



|                  |                     |
|------------------|---------------------|
| <b>Part No.:</b> | <b>649.000.01</b>   |
| <b>Series:</b>   | <b>KombiSIGN 72</b> |

#### MECHANICAL DATA

|                              |                                |
|------------------------------|--------------------------------|
| Height                       | 212 mm                         |
| Diameter                     | 70 mm                          |
| Materials                    | PA-GF<br>PC                    |
| Dome colour                  | Green<br>Red<br>Yellow         |
| Housing colour               | Black                          |
| Protection category          | IP65                           |
| Connection                   | Spring-type terminal           |
| cross-sectional area minimum | 0,25mm <sup>2</sup> / 24AWG    |
| cross-sectional area maximum | 1,50mm <sup>2</sup> / 16AWG    |
| Cable entry                  | Through hole                   |
| Cable entry maximum          | d = 11 mm                      |
| Tension relief               | Not present                    |
| Type of fixing               | Base mounting<br>Wall mounting |
| Working temperature minimum  | -20°C                          |
| Working temperature maximum  | +50°C                          |
| Weight with packaging        | 367 g                          |
| Product weight               | 309 g                          |

#### ELECTRICAL DATA

|                             |                    |
|-----------------------------|--------------------|
| Operating voltage           | 24V                |
| Operating voltage type      | AC/DC              |
| Operating voltage frequency | 50Hz               |
| Operating voltage tolerance | +/- 10%            |
| Rated operational voltage   | 24 VDC             |
| Rated operational current   | 240 mA             |
| Rated inrush current        | <500mA             |
| Protection class            | Protection class 2 |
| Pollution degree            | 3                  |

#### OPTICAL DATA

|                      |                        |
|----------------------|------------------------|
| Light source         | LED                    |
| Light colour         | Green<br>Red<br>Yellow |
| Optical signal image | Permanent              |
| Blink frequency      | 1 Hz                   |



For additional installation and mounting information, refer to the appropriate user guide at [www.werma.com](http://www.werma.com). This printed copy is for information only and is subject to alteration.

## Modular Signal Towers / KombiSIGN 72

### KS72 Classic BWM 24VAC/DC GN/YE/RD

|                      |                  |
|----------------------|------------------|
| Service life optical | 50,000 h maximum |
|----------------------|------------------|

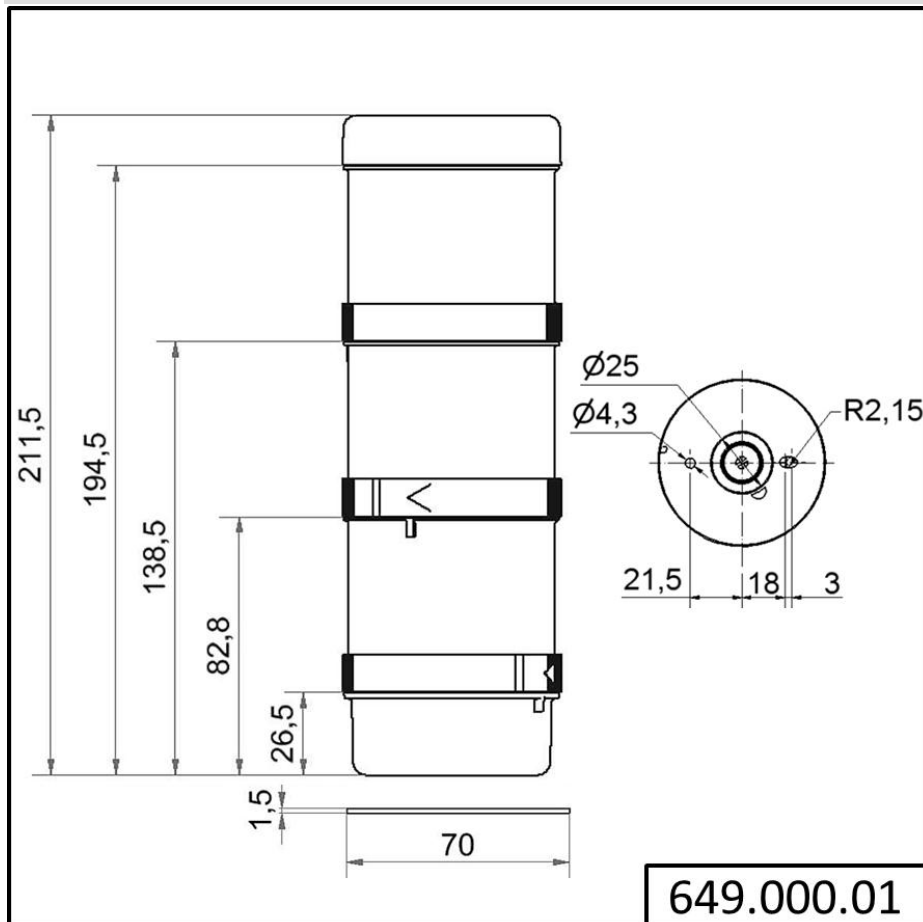
| APPROVAL DATA                 |                                |
|-------------------------------|--------------------------------|
| Conforms with CE              | Yes (through the components)   |
| Conforms with RoHS directive  | Fulfills substance restriction |
| WEEE                          | Yes                            |
| Conforms with ATEX-directive  | No                             |
| Conforms with CCC             | No                             |
| Conforms with UL              | No                             |
| Conforms with FCC             | No                             |
| Conforms with IC              | No                             |
| EAC certificate available     | Yes                            |
| Conforms with UKCA (Importer) | No                             |
| Conforms with CMIM            | No                             |
| Conforms with AS-I            | No                             |
| ICAO Certification            | No                             |
| Conforms with DNV             | No                             |
| Conforms with RoHS CN         | No                             |
| Conforms with VdS             | No                             |

**!** For additional installation and mounting information, refer to the appropriate user guide at [www.werma.com](http://www.werma.com). This printed copy is for information only and is subject to alteration.

Modular Signal Towers / KombiSIGN 72

**KS72 Classic BWM 24VAC/DC GN/YE/RD**

**DRAWING**



For additional installation and mounting information, refer to the appropriate user guide at [www.werma.com](http://www.werma.com). This printed copy is for information only and is subject to alteration.